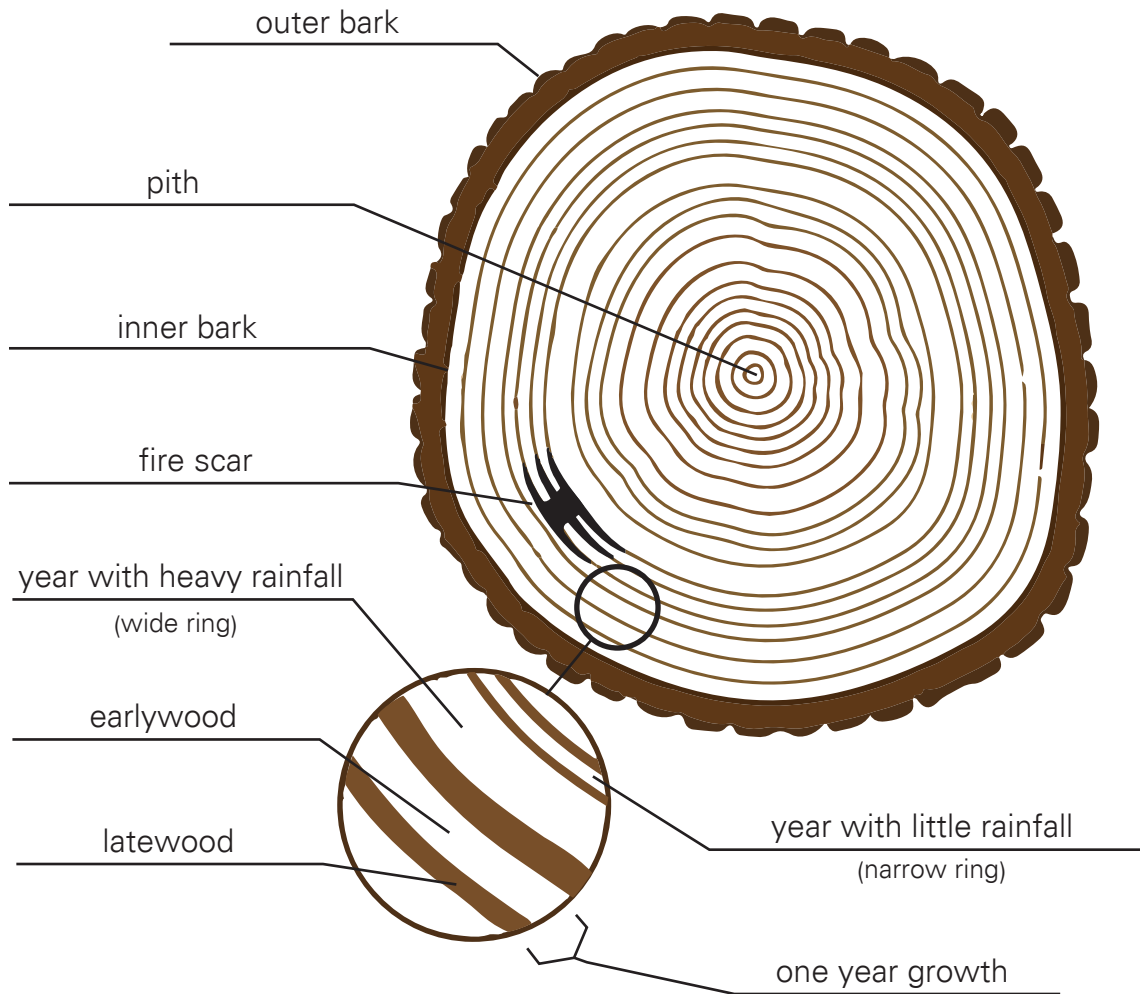


INSTRUCTIONS: Using the words from the word bank, label the correct parts and rings on the tree stump. Determine the age of the tree by counting the dark rings from the center of the tree stump out towards the bark.



How old is this tree? 19 years old

WORD BANK

pith
 outer bark
 inner bark

fire scars
 one year growth
 earlywood

latewood
 year with heavy rainfall
 year with little rainfall