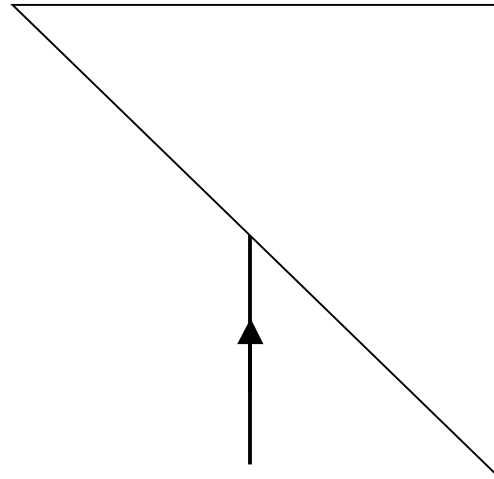


Note-Taking Guide - Program 1103

Refraction:

-
-
-

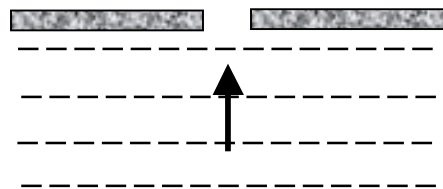
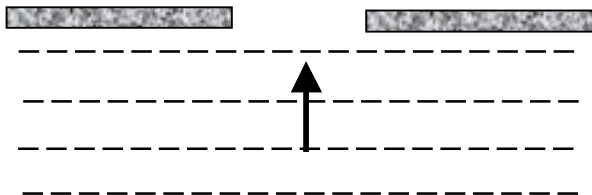
Draw the refracted wave, labeling angles of incidence and refraction. With dotted lines, draw incident and refracted wave fronts.



Problem Set #1: (Work on back.)

Diffraction:

-
-



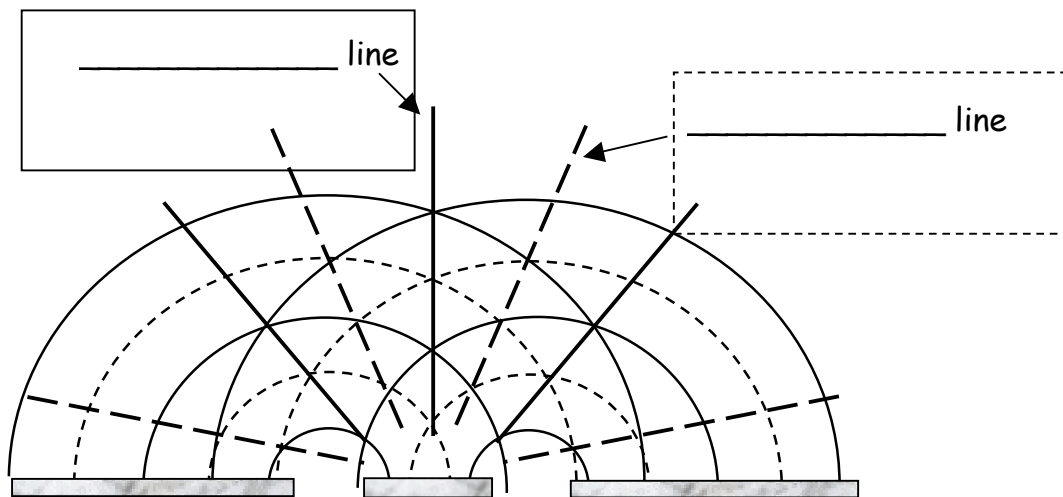
Note-Taking Guide - Program 1103

Principle of Superposition:

Interference:

-
-
-

Problem Set #2: (Work on back)



Standing wave:

-
-
-

Show What You Know (1-5):