



Guided Practice: Human Intervention

Justifier

Directions: Justify the use of each form of human intervention.

Criteria for Success:

- Correctly justify use of human interaction by stating its definition and what constructive or destructive process it controls
- Written in a complete sentence with correct capitalization and punctuation

Human Intervention	Scenario	Justification
<p style="text-align: center;">Dam</p> 	<p>Heavy rainfall has led to the rushing of river water downstream near Atlanta causing flooding. The city has decided to build a dam.</p>	<p>A dam is the most effective human interaction because a dam controls the flow of water downstream and will allow the scientist to control the water and stop the flooding.</p>
<p style="text-align: center;">Levee</p> 	<p>A storm surge is headed for New Orleans, the city is expecting its levee to stop the effects of the rising water.</p>	<p>_____ is the most effective human interaction because _____</p> <p>_____</p> <p>_____</p> <p>_____</p>

Jetty



Tybee Island off the coast of Georgia has experienced a large amount of sand being taken away from the beach. They have built a **jetty** to prevent this from continuing to happen.

_____ is the most effective human interaction because _____

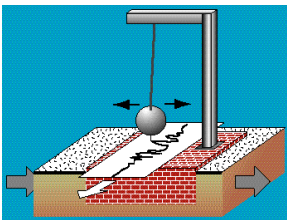
Beach Restoration or Beach Reclamation



Mary lives on the beach. Her beach is getting smaller and is losing large amounts of sand. She has replenished her beach using **beach restoration**.

_____ is the most effective human interaction because _____

Seismological Studies



A seismologist notices a large amount of movement in the Earth's crust. He uses **seismological studies** to determine whether or not to evacuate the island.

_____ is the most effective human interaction because _____
