

1. Fill in the blanks in *roomaji*. From Tim's house to his work:

 Jitensha -de 10-pun- **gurai** desu.
 Aruite 20-pun- **gurai** desu.

2. You want to go from the school to the movie theater, but you need some additional information. What would you say to find out the following? Fill in the spaces with the appropriate words and particles.

(a) the approximate distance in miles between the two places:

Gakkoo-(**kara**) eigakan-(**made**) **nan-mairu** desu-ka?

(b) how to get there (mode of transportation): **Nani** -(**de**) ikimasu-ka?

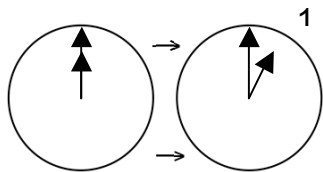
(c) approximately how long it takes (how many minutes) on foot:

Aruite **nan-pun** -gurai desu-ka?

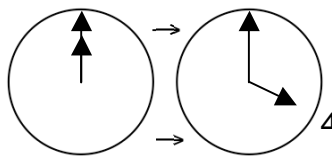
3. Length of time in hours in Japanese is (number +) **-jikan** .

4. How many hours have passed as shown by the clocks? Write the answers in *roomaji*.

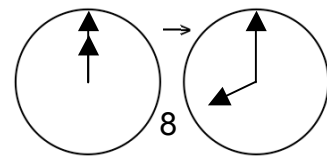
(a) **ichi-jikan**



(b) **yo-jikan**



(c) **hachi-jikan**



5. You want to know approximately how long it takes (how many hours) to get from NY to (Washintgon,) D.C. by car. What would you say? Fill in the blanks in *roomaji*.

Nyuuyooku-(**kara**) Diishii-(**made**) **kuruma** -de **nan-jikan** -gurai desu-ka?

6. From Los Angeles to Japan, it takes about **eleven hours** by **airplane** .

7. Fill in the blanks in *roomaji* for (a) and in English for (b).

(a) *Subway* wa nihongo-de **chikatetsu** -to iimasu.

(b) *Chika* means **underground** , and *tetsu* means **rail** .

8. Complete the following information about Dawn in English. From her house to:

(a) the department store, it takes about 20 minutes by car.

(b) the university, it takes about 4 minutes (by) walking.

(c) the post office, it takes about 10 minutes by bicycle.

9. In the skit, what were the two buildings that Mayumi was supposed to find near the station? Answer in English.

(a) bank (a) post office

10. Write the readings of these *katakana* words in *roomaji*.

メニュー menyuu

ピザ piza

ハンバーガー hanbaagaa

サンドイッチ sandoitchi

スパゲティー supagetii

アイスティー aisu tii

オレンジジュース orenji juusu

ホットミルク hotto miruku