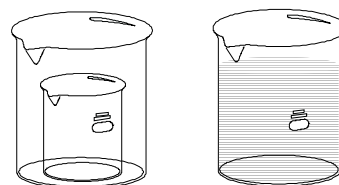


Clue Sheet - Disappearing Beaker

Why does the small beaker disappear when both beakers are filled with corn oil?



Clue #1:

Objects are visible because they _____ light to our eyes.

What determines how much light wave energy is reflected and transmitted at a boundary? _____

Clue #2:

Which wave property does a medium affect? _____

Clue #3:

medium	n
air	
water	
beaker glass	
corn oil	?

Air, water, and glass have (the same, different) "n" values, so light travels at (the same, different) speeds in them.

When light reaches the boundaries, (none, some, all) will be reflected back to the eyes, and (none, some, all) will pass through.

Clue #4:

What could a body be made of so that light would go straight through a person instead of reflecting back to your eyes? _____

What hot liquid could be poured into both beakers to make the inner beaker disappear? _____

CONCLUSION: What does all this have to do with corn oil?

Put all the clues together and write a paragraph, using correct physics terms, to explain why the little beaker disappears.